

SALITA™ MODULAR LOUNGE

Salita helps relaxed, sociable gathering spaces take shape with handcrafted, durable materials and a tailored aesthetic. With more than 25 seating and table elements for creative placemaking, Salita delivers a refined lounge experience for outdoor areas ranging from compact to spacious.



Center Section
SL 2160L



Width	30 in	76 cm
Depth	30 in	76 cm
Height	31 in	79 cm
Seat Height	18 in	46 cm
Weight	55 lb	25 kg
COM	4.5 yd	

Corner Section
SL 2170L



Width	30 in	76 cm
Depth	30 in	76 cm
Height	31 in	79 cm
Seat Height	18 in	46 cm
Weight	61 lb	28 kg
COM	5 yd	

Curved Section
SL 2190L



Width	42.5 in	108 cm
Depth	30 in	76 cm
Height	31 in	79 cm
Seat Height	18 in	46 cm
Weight	107 lb	49 kg
COM	9 yd	

2 Seat Left Arm Section
SL 2140LL



Width	61 in	155 cm
Depth	30 in	76 cm
Height	31 in	79 cm
Seat Height	18 in	46 cm
Arm Height	25 in	63.5 cm
Weight	95 lb	43 kg
COM	9 yd	

2 Seat Right Arm Section
SL 2150LR



Width	61 in	155 cm
Depth	30 in	76 cm
Height	31 in	79 cm
Seat Height	18 in	46 cm
Arm Height	25 in	63.5 cm
Weight	95 lb	43 kg
COM	9 yd	

2 Seat with Left Side Table
SL 2130LLT



Width	92 in	234 cm
Depth	30 in	76 cm
Height	31 in	79 cm
Seat Height	18 in	46 cm
Arm Height	25 in	63.5 cm
Weight	115-127 lb	52-58 kg
COM	9 yd	

2 Seat with Right Side Table
SL 2130LRT



Width	92 in	234 cm
Depth	30 in	76 cm
Height	31 in	79 cm
Seat Height	18 in	46 cm
Arm Height	25 in	63.5 cm
Weight	115-127 lb	52-58 kg
COM	9 yd	

3 Seat Sofa Center Section
SL 2130LC



Width	90 in	229 cm
Depth	30 in	76 cm
Height	31 in	79 cm
Seat Height	18 in	46 cm
Arm Height	25 in	63.5 cm
Weight	131 lb	59 kg
COM	13 yd	

3 Seat Sofa Left Arm Section

SL 2130LL



Width	91 in	231 cm
Depth	30 in	76 cm
Height	31 in	79 cm
Seat Height	18 in	46 cm
Arm Height	25 in	63.5 cm
Weight	134 lb	61 kg
COM	13 yd	

3 Seat Sofa Right Arm Section

SL 2130LR



Width	91 in	231 cm
Depth	30 in	76 cm
Height	31 in	79 cm
Seat Height	18 in	46 cm
Arm Height	25 in	63.5 cm
Weight	134 lb	61 kg
COM	13 yd	

3 Seat Sofa Left Arm Chaise Lounge

SL 2130-2890LLA



Width	92 in	234 cm
Depth	61 in	155 cm
Height	31 in	79 cm
Seat Height	18 in	46 cm
Arm Height	25 in	63.5 cm
Weight	172 lb	78 kg
COM	15 yd	

3 Seat Sofa Right Arm Chaise Lounge

SL 2130-2890LRA



Width	92 in	234 cm
Depth	61 in	155 cm
Height	31 in	79 cm
Seat Height	18 in	46 cm
Arm Height	25 in	63.5 cm
Weight	172 lb	78 kg
COM	15 yd	

Armless Chaise Lounge

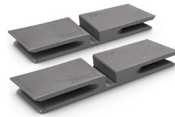
SL 2890LC



Width	30 in	76 cm
Depth	61 in	155 cm
Height	31 in	79 cm
Seat Height	18 in	46 cm
Weight	77 lb	35 kg
COM	7.5 yd	

Connectors (set of two)

51-11005



CONSTRUCTION

Frame: Constructed from high quality, pure aluminum alloy, frames are coated in our Marine Primer and finished in an architectural-grade powder coat, creating a rich, dimensional color.

Marine Primer: A proprietary spray epoxy basecoat seals out oxygen and prevents corrosion.

All-Weather Woven: Providing the structural surround of the Salita Collection, this sophisticated synthetic woven is rated for all-weather performance, resists fading under UV exposure, and remains supple and flexible in demanding outdoor environments.

Contract-Grade Removable Cushions: Comprised of long-wearing, high resilience foam, cushions are plush, supportive, and breathable with enhanced protection from a water and bacteria-resistant fabric liner. Cushions are fastened to frames with marine grade snaps, keeping them neatly in place. The

price list includes a graded-in selection of contract quality, high-performance outdoor fabrics. For customer's own material (COM), please contact customer service for details.

Connectors: Flexible nylon connectors secure Salita frames together. A set of two is included with every modular element. Replacement sets are available for purchase. No tools are necessary for reconfigurations.

Aluminum: Sourced from high quality, pure aluminum alloy, aluminum tops are protected by our Marine Primer and finished with an architectural-grade powder coat. Available in solid and perforated patterns.

Corian: Defined by superior durability and low maintenance, Corian is a solid, non-porous surface with outstanding UV performance. This impermeable tabletop prevents the growth of mold and mildew while its integral color promotes high abrasion resistance and easy cleaning.

Ecowood: Produced from a high-density polymer using recycled materials and sustainable manufacturing methods, Ecowood provides warmth and texture through its wood grain aesthetic.

Engineered for diverse weather conditions, Ecowood will not corrode, splinter, or rot, and requires no sealing or painting.

Pietra: Marrying the look of Italian marble with the endurance of dense, engineered stone, Pietra boasts exceptional UV and scratch resistance, low porosity, and superior colorfastness.

FINISHES

Visit pavilionfurniture.com/finishes or click the links below for all available finish options.

Powder Coat **Fabric**
All-Weather Woven **Table Tops**

SPECIFICATION

Specify powder coat paint color, cushion fabric and table top material.

ACCESSORIES

Tailored Protective Covers:

Recommended for the protection of your investment, our covers are constructed from a high-quality, waterproof fabric that is stain and UV resistant while also inhibiting the growth of mold and mildew. Available in taupe or grey, covers are sized to each product and snugly secure to frames with adjustable Velcro straps.

ONLINE RESOURCES

pavilionfurniture.com

Warranty

Care & Maintenance

PAVILION